

# 6 FAT MEN - Flip-it Border Instructions

Want to combine the 6 Fat Men series into one big snowy puzzle? Here's how to do it! We stitched the entire series together on 32 ct. Amber Linen from Wichelt Imports. Choose whatever fabric and fabric count you prefer. Remember to find something dark enough for the snow to show well – there are 6 FAT MEN made of snow to stitch!

Stitch count for the entire project is 182W x 147H.

Here is the thread list for the entire project is below. The numbers following each color are suggested number of skeins to complete the series. If no number appears, you need only one skein. If you choose a different fabric count, your quantity may vary.

Weeks Dye Works begonia (2), chestnut, crimson, deep sea, graphite, grasshopper, molasses, monkey grass, palomino, tiger's eye, whitewash (5).

Crescent Colours blackbird, colonial copper, queen bee, really teally

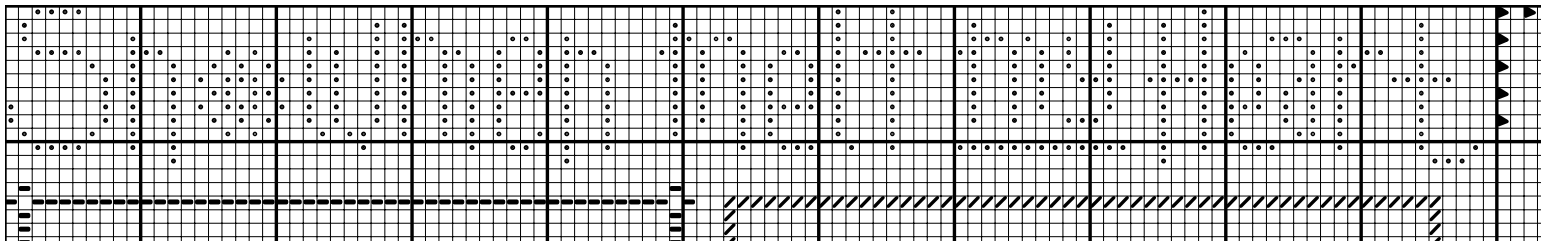
Gentle Art Sampler Threads huckleberry

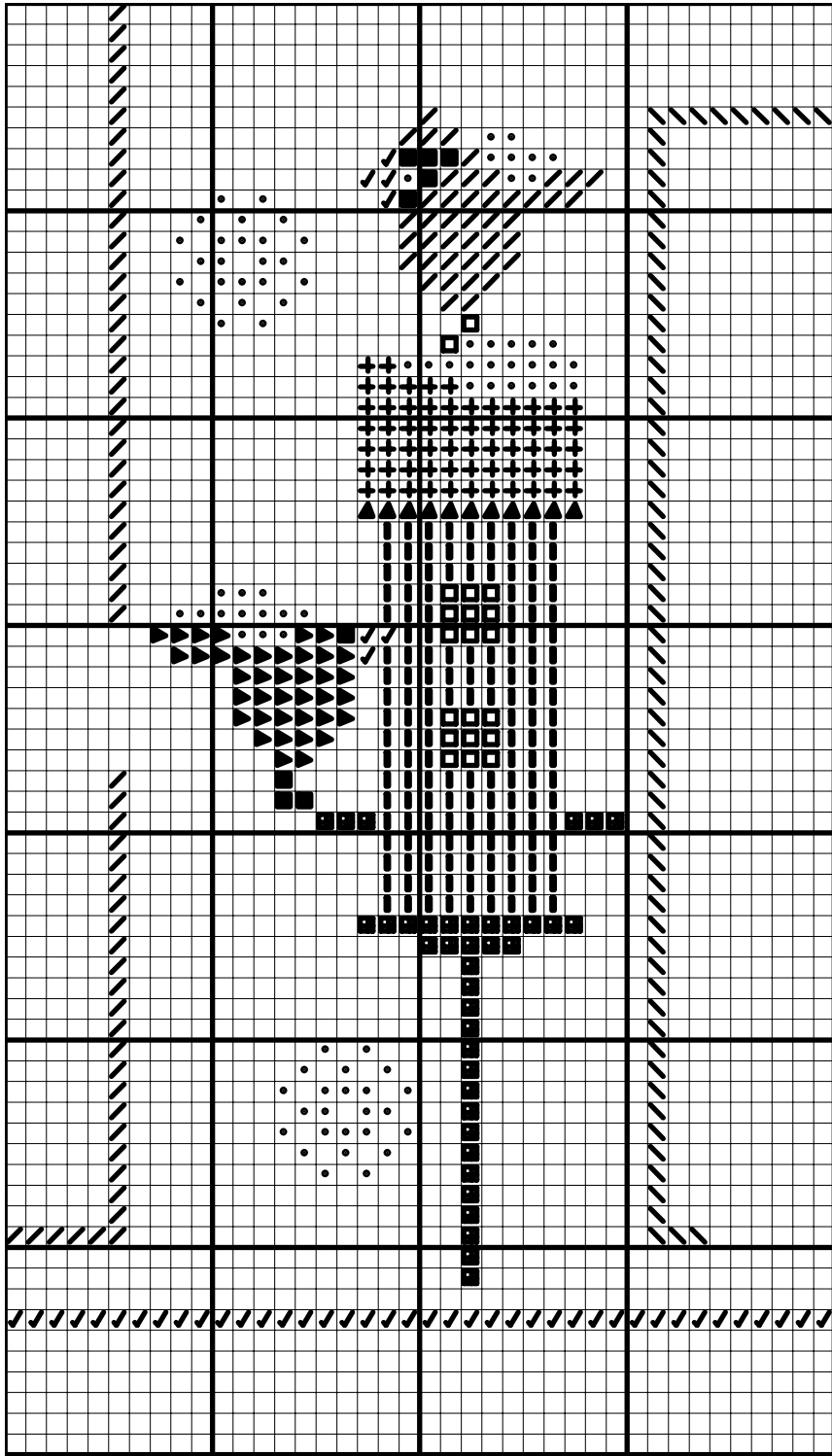
Use the provided graph for placing the 6 designs in the group project. We have duplicated the borders on each design, to aid in easy placement. Just match the borders on the individual charts with the borders provided in our graph, and you're ready to stitch! The FREE design elements are shown on the big graph, and also shown enlarged below. These elements will tie all the designs together.

HAPPY SNOWY STITCHING!

Lizzie★Kate

- blackbird CC
- ▬ queen bee CC
- / begonia WDW
- ▣ crimson WDW
- ▶ deep sea WDW
- molasses WDW
- ▲ monkey grass WDW
- + palomino WDW
- ✓ tiger's eye WDW
- whitewash WDW





**Snowed  
In**

**Snow  
Fun**

**Snow  
Friends**

**Let It  
Snow**

**Snow  
House**

**Snow  
Day**

